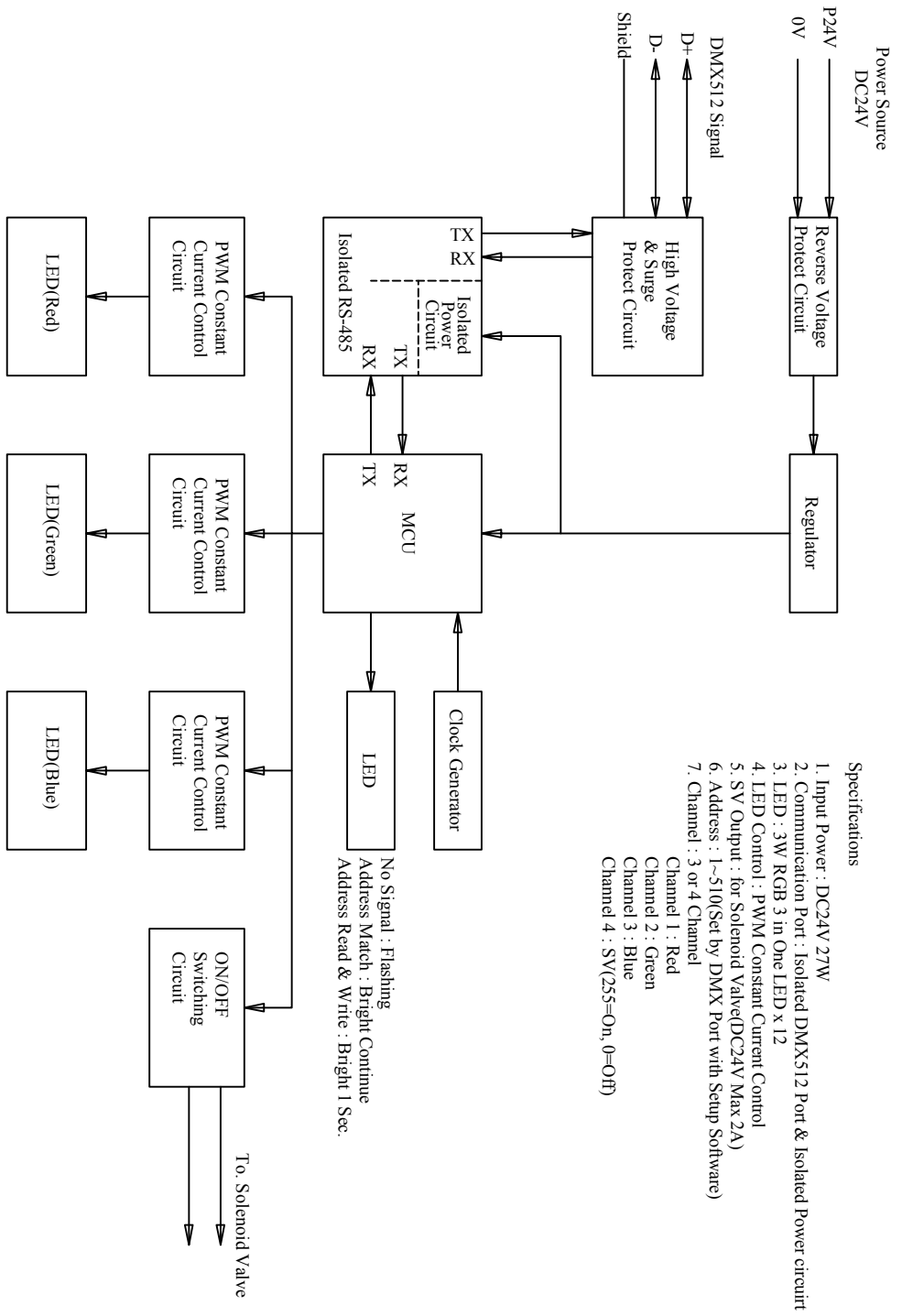
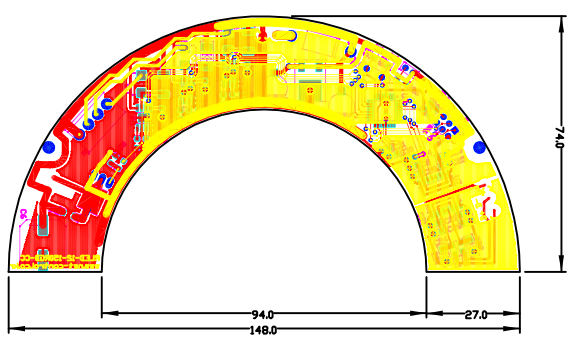


RevNo	Revision note	Date	Signature	Checked
*	*	*	*	*



- Specifications
1. Input Power : DC24V 27W
 2. Communication Port : Isolated DMX512 Port & Isolated Power circuit
 3. LED : 3W RGB 3 in One LED x 12
 4. LED Control : PWM Constant Current Control
 5. SV Output : for Solenoid Valve(DC24V Max 2A)
 6. Address : 1~510(Set by DMX Port with Setup Software)
 7. Channel : 3 or 4 Channel
 - Channel 1 : Red
 - Channel 2 : Green
 - Channel 3 : Blue
 - Channel 4 : SV(25=On, 0=Off)

No Signal : Flashing
 Address Match : Bright Continue
 Address Read & Write : Bright 1 Sec.

To Solenoid Valve

NO.	DESCRIPTION	MATERIAL	Q.TY	REMARK
1				*

Designed by	Checked by	Approved by - date	Filename	Date	Scale
Moon Soo Gil	문수길	****.****	****	****	N/A

Net-Control

<http://www.net-control.co.kr>

DMX512 RGB RING LED LAMP DRIVER BOARD
 NET-DMX-RLED-12-150RGB-CC