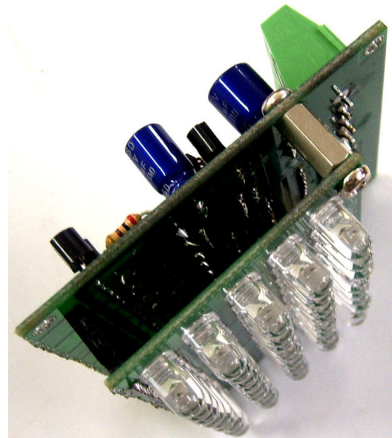
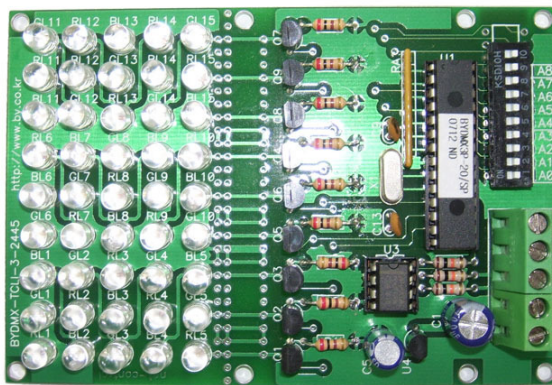


BYDMX3P-20/SO
BYDMX3P-20/SP
DEMO BOARD

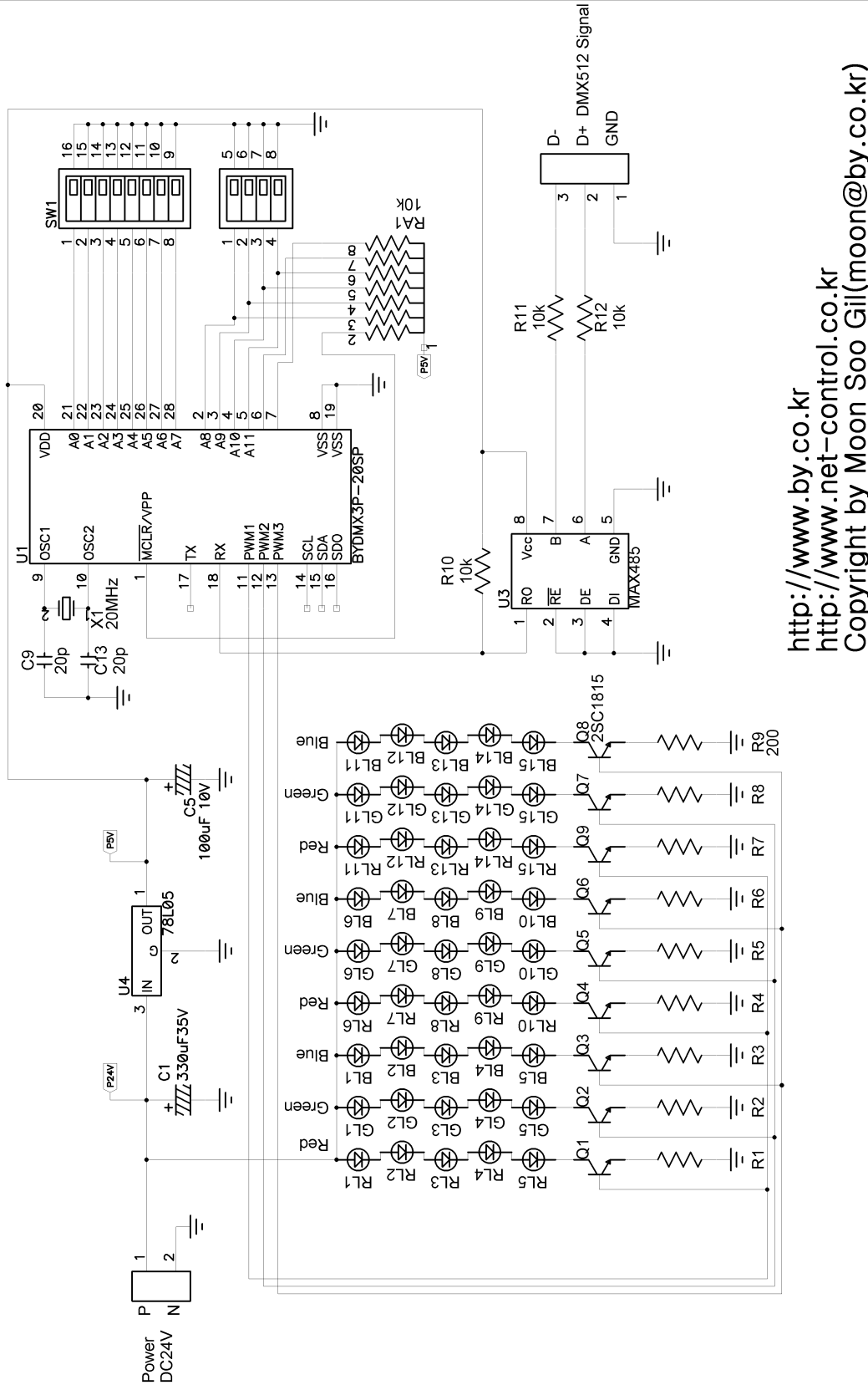
BYDMX-TCLI-3-2445

Net-Control



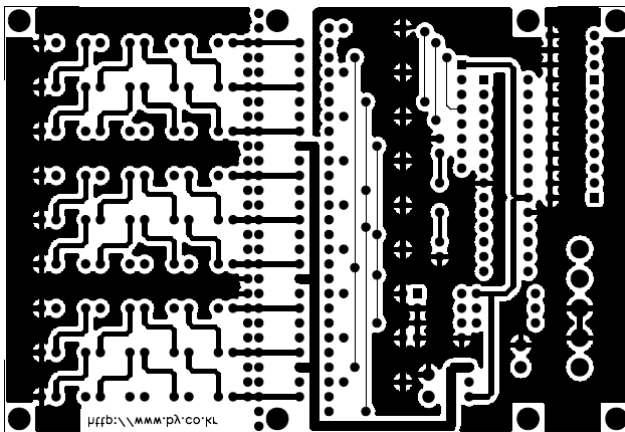
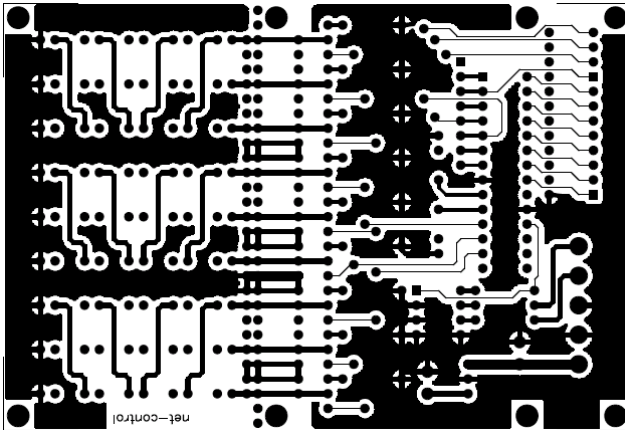
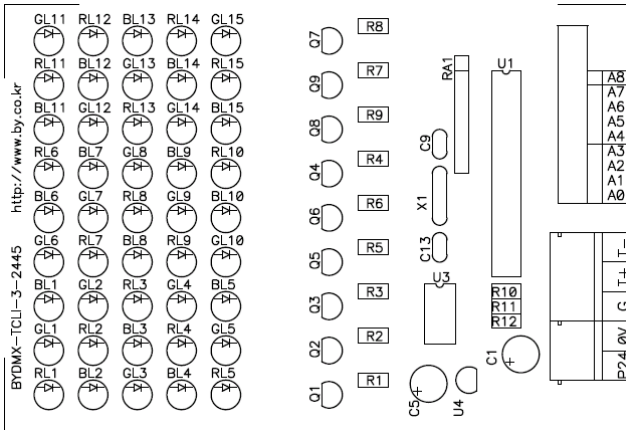
1. Schematic

DMX512 True Color LED Lamp Demo Board Full Schematic
(BYDMX-TCLI-3-2445)



<http://www.by.co.kr>
<http://www.net-control.co.kr>
 Copyright by Moon Soo Gil(moon@by.co.kr)

2. PCB Drawing

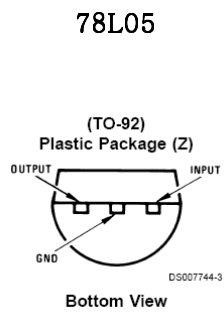
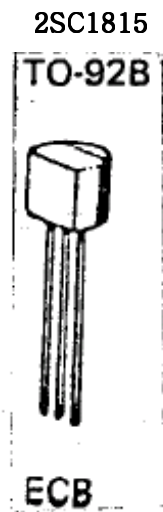


Dimension 108 x 74(mm)

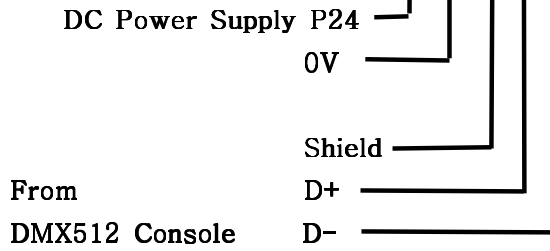
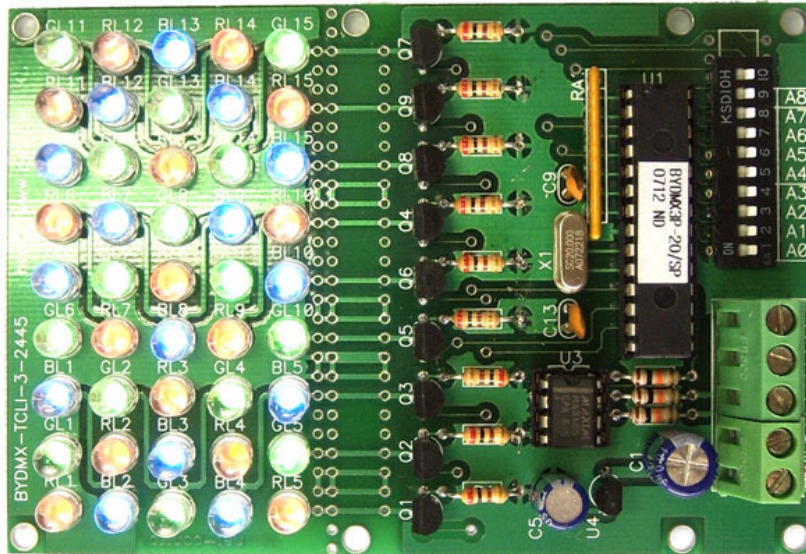
- RL* = Red LED
- GL* = Green LED
- BL* = Blue LED

3. Parts List

Name	Component	Q'TY	Maker	Remark
U1	BYDMX3P-20SP	1	Net Control	DMX512 Receiver Chip
U2	*****	****	*****	*****
U3	MAX485CPA	1	MAXIM	Communication Chip
U4	78L05	1		5V Regulator
X1	20MHz	1		Crystal
Q1--Q8	2SC1815	8		Small NPN Transistor
RA1	10K 1/4W 9P	1		Resistor Array
SW1	10P or 12P	1		DIP Switch
C1	330uF 35V	1		Aluminum Capacitor
C5	100uF 10V	1		Aluminum Capacitor
C9, C13	20pF	2		Ceramic Capacitor
R10,11,12	10K 1/4W	3		Carbon Resistorc
R1--R9	200 1/4W	8		Carbon Resistorc
RL1-RL15	Red 5mm LED	15		High Brightness LED
GL1-GL15	Green 5mm LED	15		High Brightness LED
BL1-BL15	Blue 5mm LED	15		High Brightness LED
TB	2P	1		200mil Screw terminal
TB	3P	1		200mil Screw terminal



3. Finished



Note

Power ON Default Condition : All Output is 1/255 duty cycle(No DMX Signal).



ON(1/255)
OFF(254/255)

- Address : Red
- Address + 1 : Green
- Address + 2 : Blue